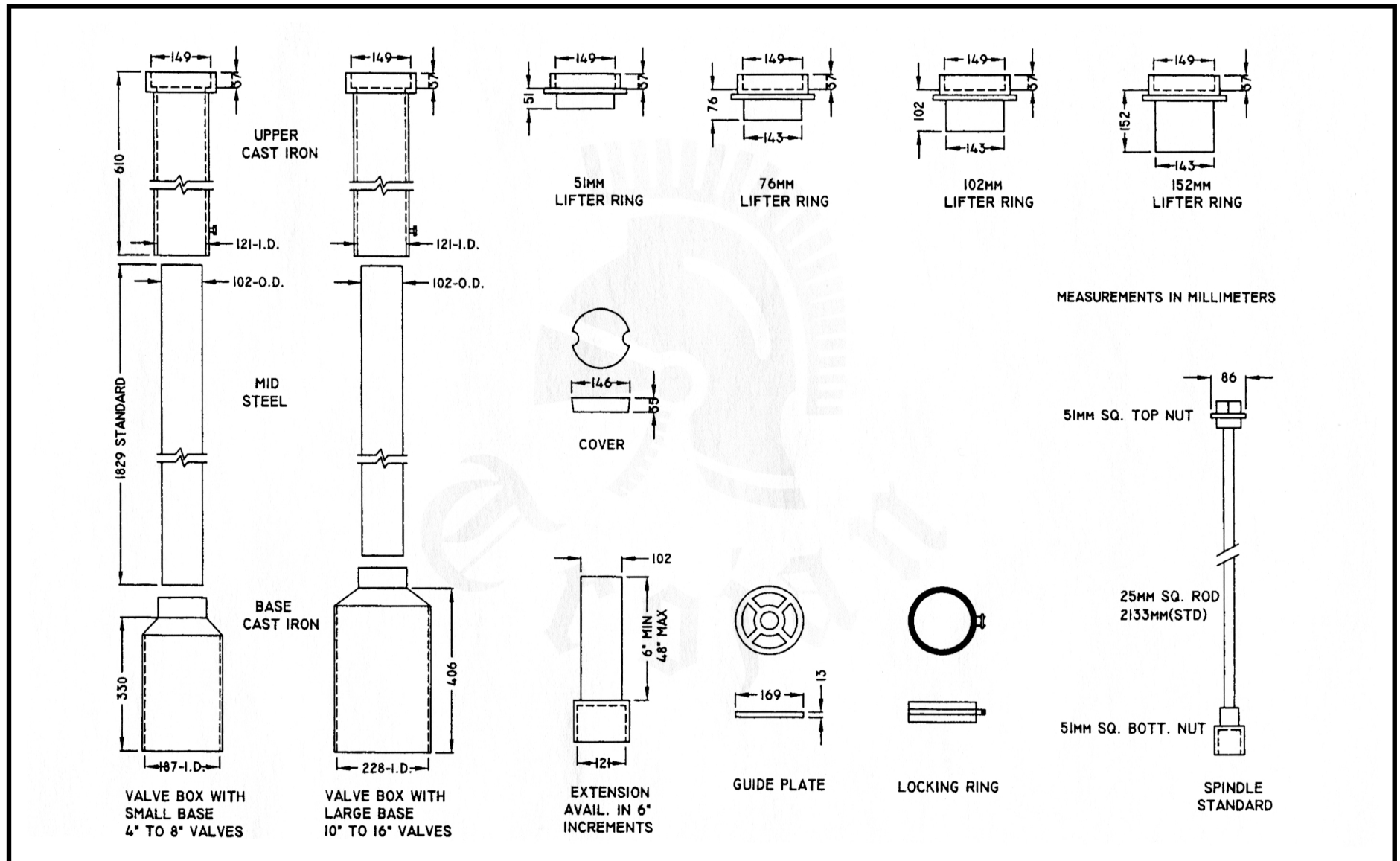




Please note that drawings are approximate and not to be used for engineering purposes – please contact us for specific dimensions.

### TYPE C VALVE BOX AND COMPONENTS



ISO 9001-2000 CERTIFIED

RATED FOR HS-20 LIVE LOAD

MEASUREMENTS IN MILLIMETERS

# TROJAN INDUSTRIES INC.

CALGARY • EDMONTON, ALBERTA