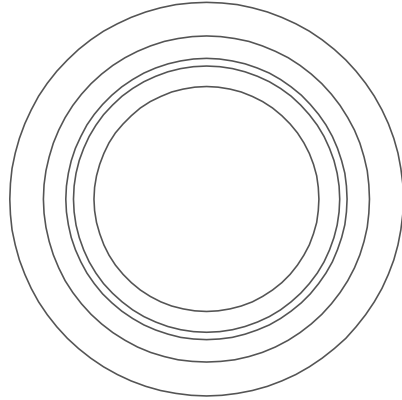
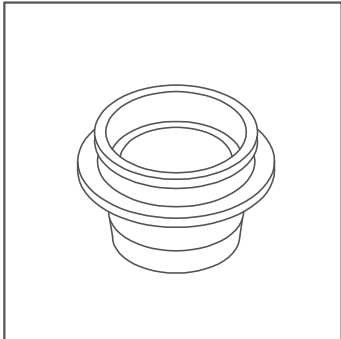


TYPE C 50, 75, 100, 150 LIFTER RINGS

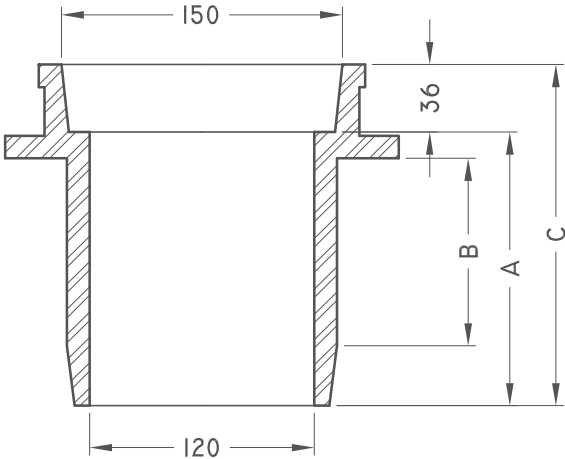
C-LR



PLAN



MASS	RING	DIM	A	B	C
5.13KG(11.40LBS)	NO.1		50	0	86
5.49KG(12.21LBS)	NO.2		75	25	111
5.99KG(13.31LBS)	NO.3		100	50	136
7.56KG(16.80LBS)	NO.4		150	100	186



SECTION

ISO 9001-2000 CERTIFIED

MEASUREMENTS IN MILLIMETERS



1350 FIFE STREET
 WINNIPEG, MB
 R2X 2N7
 (P) 204.633.5535
 (F) 204.694.2210